

## **! Glue instructions - Weight increase wheels !**

These instructions are intended to help you glue the weight increases to/into the tires of your Einhell cylinder mower, in the form of text and images. **! Good luck !**

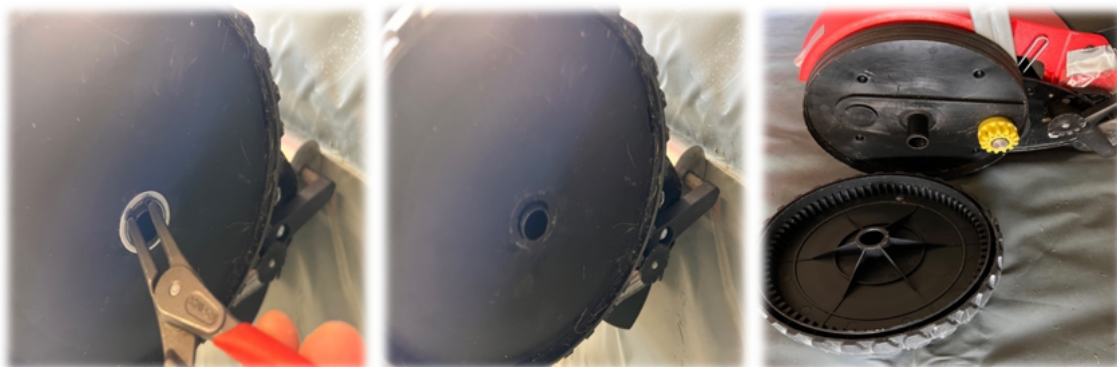
- First of all, the hubcaps in the wheels of the cylinder mower must be dismantled or removed. these can be levered out with a flat-head screwdriver.



- On the side, without hubcaps, the whole thing looks like this:



- This is followed by the disassembly according to pictures, step by step:



- If you have removed the wheels on both sides, then we come to clean or degrease the adhesive surfaces of wheels and weight plates.
- Additional tip or very suggestive - > roughens the surfaces to be glued a bit coarsely / better connection option
  - **! It is very important that all adhesive surfaces > are well cleaned, roughened and made free of grease!**



- Now silicone or better assembly adhesive (suitable for plastic in combination with metal) can be applied on both sides (wheel & weight plate), on both sides (wheel & weight plate), selectively or in a serpentine line.



After applying the adhesive, the discs can be inserted into the wheel. Please make sure to insert them as centrally as possible, towards the rim hole.

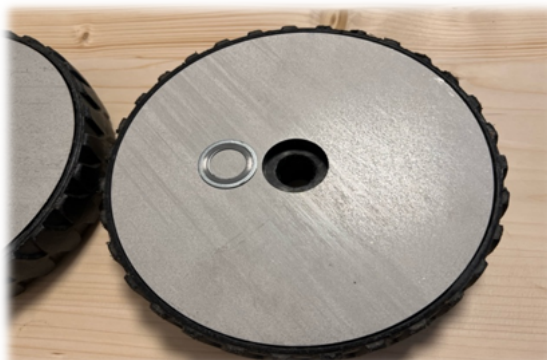
- Then you can press the disc slightly and twist it a little at the same time to "distribute" the glue.
- Now the discs should be pressed on, at least overnight, as the inner wheel surfaces are slightly cambered.

- Simply inserting the weight plates is therefore not enough to glue the discs well to the wheels.
- To be able to imagine it better or to show how I do the gluing of the weight plates, pictures below.
- 4 screw clamps (2 each, if available) and 2 shorter pieces of wood



**! I ask you to adhere to the drying time according to the manufacturer's instructions adhesive or at least overnight, under "tension", let it dry!**

- After the drying time has been observed, the wheels are ready for use and the dismantling or assembly can begin!



**! The assembly is done in the opposite order  
for dismantling the wheels !**

-- --

Green greetings from Austria  
Maeh-Werk SpindelMaeherTuning e. U.  
CEO & Founder