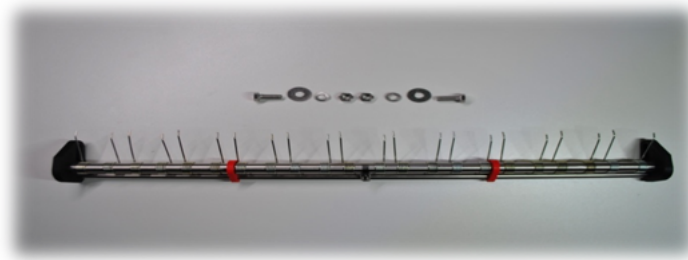


Installation Instructions Lawn Comb 3.0

These instructions are only intended as an aid (step by step) for the Mounting Lawn Comb 3.0 and do not have to be used in this way if you personally want to follow a better path to the "result".

Furthermore, the instructions for the built-in lawn comb are also intended to serve non-manual people who want to attach or mount the lawn comb optimally and without much question mark in their heads.

! The lawn comb, including fastening material, should arrive after delivery, in proper condition, as according to the photo! Otherwise: Please let us know as soon as possible!



Assembly can begin.

1. The mower should be tilted or leaned slightly in order to be able to work well and "safely".



2. After that, the prepared comb can be inserted. This can be inserted a little more strictly. ! Don't worry, that's the way it is intended!

You can therefore decide on the optimal position lawn comb at your leisure, depending on your soil conditions, in order to then mark and drill the position drill holes.



3. After inserting the lawn comb, under point 2, the optimal installation height is determined. This works best when the mower is standing normally (as when mowing) on your own lawn, the lawn has just been given the standard cutting height and you get down on your knees and look at the whole thing from below.

In addition, my mounting plates offer a height adjustment of 14mm based on the slotted hole in the mounting plates after positioning/fixing the lawn comb on the mower

! Please note when positioning !

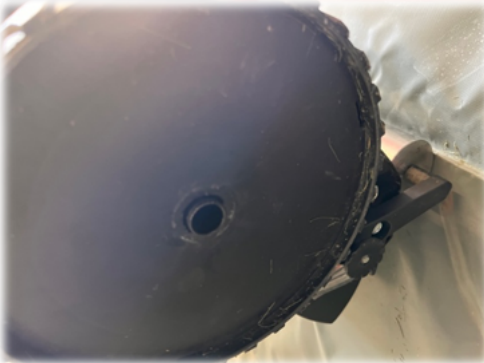
Once you have determined the optimal immersion depth/installation height for yourself and your lawn, including any angular position of the comb tines, the drill holes can already be marked.

4. Once the drill holes have been marked, the grass crest can be removed again.
5. Now comes the dismantling of the left and right wheels on the cylinder mower. As can be seen in the picture, above, above point 3, the left wheel is the non-drive wheel and the right wheel is the wheel with the drive unit for the spindle.

6. **Disassembly left wheel:**



Remove retaining ring and washer



Plastic wheel can be removed



7. **Disassembly right wheel:**



Remove retaining ring and washer

Plastic wheel can be removed



Now loosen the 4 Phillips screws and remove or pull them down together with the plastic cap.



If
an



it looks like the left of the picture after removing it from the lid, please don't panic. The drive stone marked with arrow and the drive wheel can be attached again as normal as in the next 2 pictures.

As
to



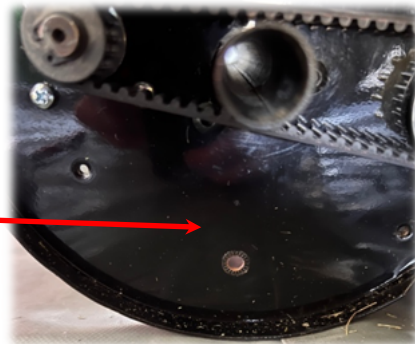
can be seen in the picture, insert the stone and hold it. Slide the yellow drive wheel back on, turning a little until you feel a "small" resistance and the wheel has returned its original position.



8. Thus, hopefully, both wheels have been successfully dismantled and the drilling of the mounting holes for the comb can begin. **! I myself chose the diameter of 6.5mm for the drill hole! Punching a borehole is an advantage!**

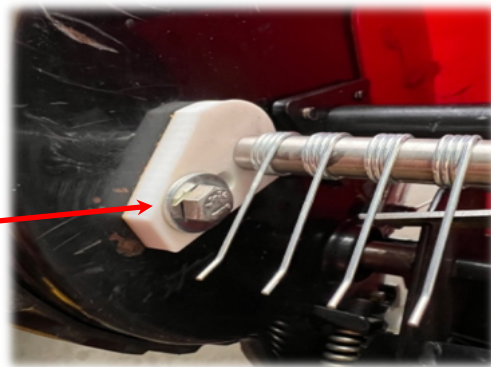
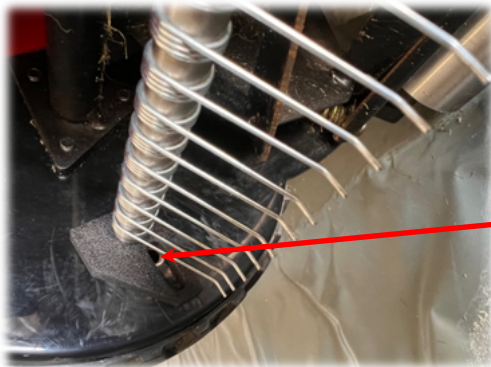


Left



right side

9. Once the drill holes have been drilled, then 2 holes should have been created for the attachment of the comb. See point 8.
10. Now the comb can be pushed back in and the screws can be pre-assembled.



! Please make sure that the body washer ("large" smooth washer) is used on the screw head and the locking washer (scrounging washer, ribbed) on the nut side!



11. After "pre-assembly" of the screws, the selected height, position and inclination of the lawn comb can be checked again. If everything fits, the screws can be tightened (tightened).
12. Once this is done, the wheels can be remounted on the left and right. This is done, PLEASE, in the opposite order of disassembly for the left and right sides, see above!

Thus, the installation of the turf ridge is complete. Nothing stands in the way of use or rehearsal!

According to my own experience, the disassembly process may have to be repeated again until you have determined or found the best or most proven position for the use of the lawn comb on your cylinder mower or on your own green.

However, this should no longer be a problem with your previous "exercise", together with the detailed instructions.

The fastening material is included in the shipment.

PS: If you still have questions, please just get in touch. I am also happy to receive suggestions for improving my instructions.

Wishes you good results with your lawn comb 3.0,

Dominik
Maeh-Werk SpindelMaeherTuning e. U.
CEO & Founder